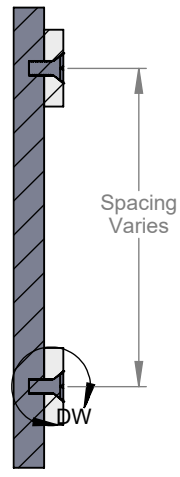
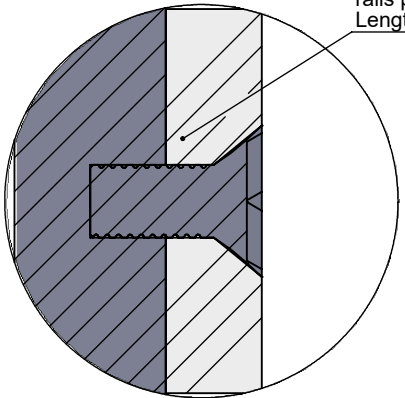


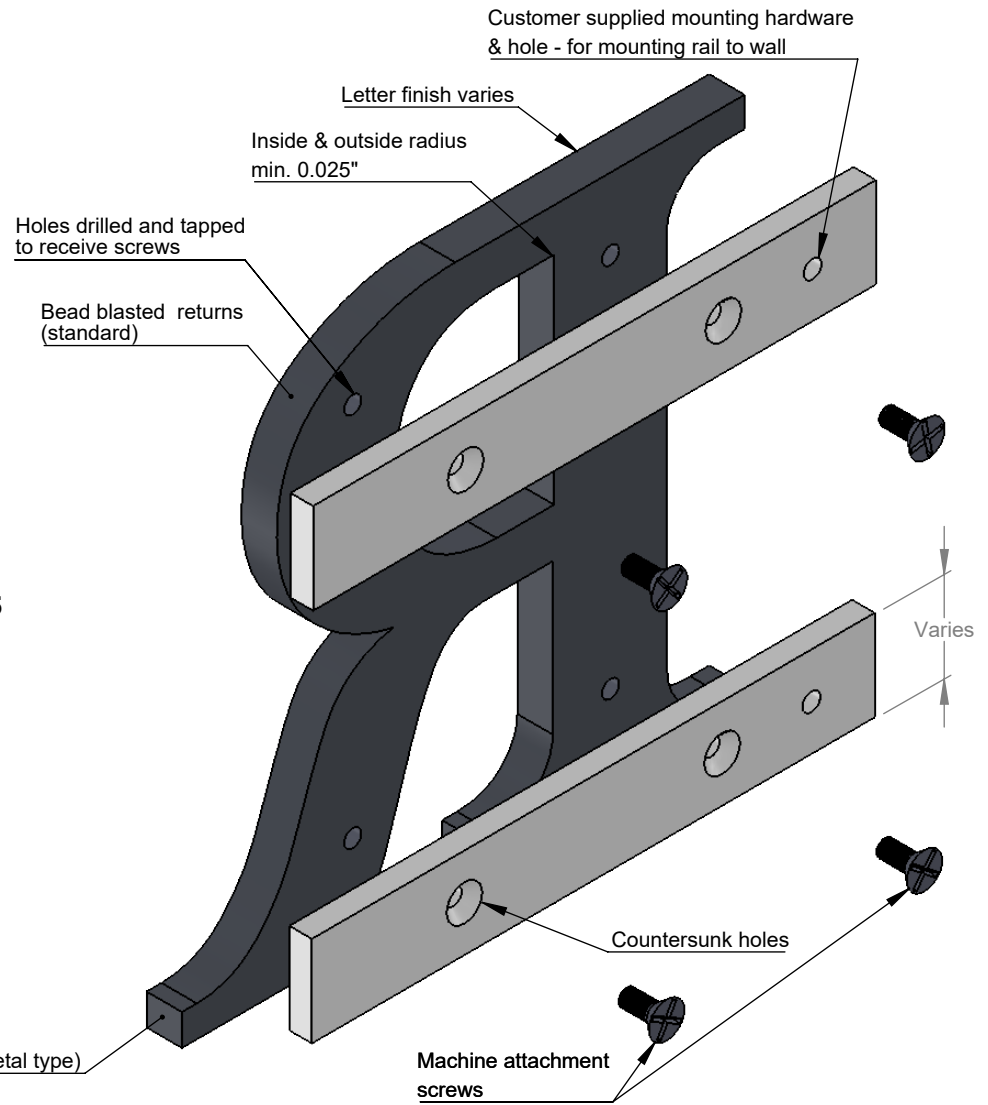
**FRONT VIEW II SCALE 1:2.5**



**SECTION VIEW A-A II SCALE 1:2.5**



**DETAIL DW II SCALE 2:1**



**ISOMETRIC BACK VIEW II SCALE 1:1.5**

- NOTES:**
- 4" - 24" high letters
  - 10/24 or 1/4-20 stainless steel attachment screws
  - Minimum 4 screws per letter (2 per rail)
  - 1/4 thick aluminum rails, painted or anodized, max 95" long x 1/4", 1/2", 3/4" or 1" wide
  - Letters mounted by word, rails pre-assembled for fit, larger letters may ship loose
  - Metal rails are designed to be mounted to load bearing structures, holes and location to be determined by installer (rail mounting hardware & holes not included)
  - Letters or logos, standard or custom



TITLE: <b>FLAT CUT METAL - DOUBLE RAIL MOUNT</b>			
MATERIAL: <b>METAL</b>		PRODUCT TYPE: <b>FLAT CUT METAL</b>	
DWG NO. FTMT40	REV 10/25/16	SCALE: AS INDICATED	SHEET 1 OF 1