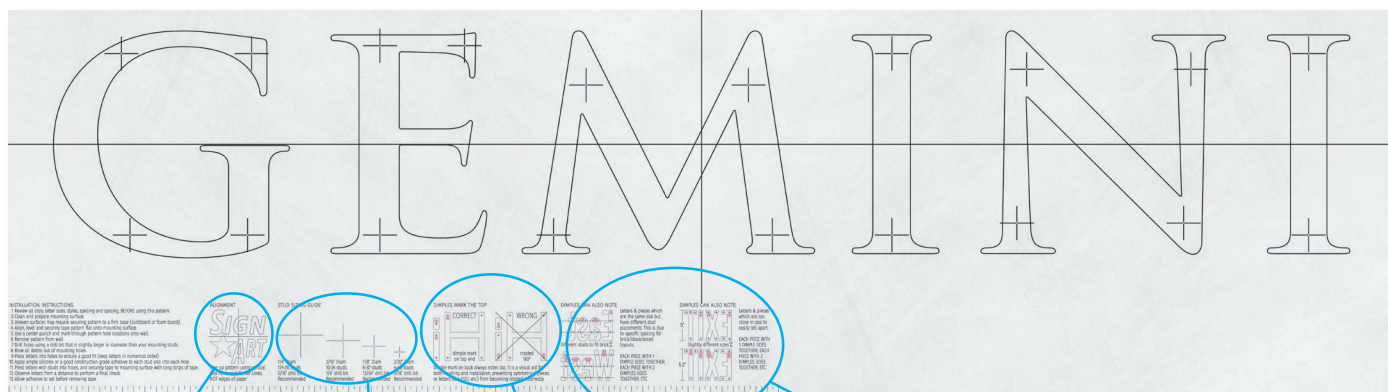


PLANTATION FIRE DEPARTMENT

Introducing Perfect Pattern™ from Gemini.

Install with confidence, every time, with Perfect Pattern – a change in the way Gemini creates mounting patterns. Starting with flat-cut metal letters and logos, this new digital technology addresses concerns heard from customers, by providing a better, more accurate tool to align letters and match with exact drill hole locations. The computer-generated pattern is now printed on Tyvek®, making it resistant to tears and the weather, and able to stand up to repeated use. The exact hole locations are also saved and easily replicated for replacement letters or repeat orders.

Improve your installation experience and ensure the look of each finished sign, with Perfect Pattern from Gemini—your guide to a perfect installation.



INSTALLATION INSTRUCTIONS
 1. Remove all studs, letter, logo, spacing and backing. REMOVE using this pattern.
 2. Clean and inspect mounting surface.
 3. Double check the mounting surface is the exact location of the letter.
 4. Align studs and spacing hole pattern for even mounting surface.
 5. Use a square and a pencil to mark through pattern for location and size.
 6. Remove pattern for use.
 7. Use the square and pencil to mark through pattern for location and size.
 8. Use the square and pencil to mark through pattern for location and size.
 9. Use the square and pencil to mark through pattern for location and size.
 10. Use the square and pencil to mark through pattern for location and size.
 11. Use the square and pencil to mark through pattern for location and size.
 12. Use the square and pencil to mark through pattern for location and size.

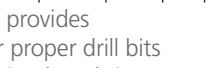
Center Line Alignment

Patterns are aligned with horizontal and vertical lines from the center making installation more reliable.

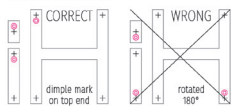


Stud Sizing Guide

The stud sizing guide provides recommendations for proper drill bits depending on determined stud size.



DIMPLES MARK THE TOP

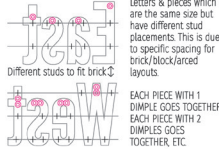


Dimple mark on back always notes top. It is a visual aid for both finishing and installation, preventing symmetrical pieces or letters (like H/O, etc.) from becoming rotated incorrectly.

Top/Bottom Orientation

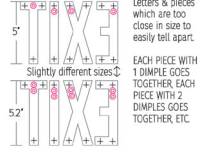
Dimples are marked on the back to help identify proper orientation.

DIMPLES CAN ALSO NOTE



EACH PIECE WITH 1 DIMPLE GOES TOGETHER. EACH PIECE WITH 2 DIMPLES GOES TOGETHER, ETC.

DIMPLES CAN ALSO NOTE



EACH PIECE WITH 1 DIMPLE GOES TOGETHER. EACH PIECE WITH 2 DIMPLES GOES TOGETHER, ETC.

Features and Benefits

- Precise drill locations marked, along with recommended drill bit size
- Identical letters are interchangeable
- Printed on weather-resistant Tyvek for no smudging, no tearing
- Printed legend with instructions
- Ability to produce and install replacement letters, with no extra drilling
- Ability to pre-order a pattern allowing pre-work for large scope installations

For more information about Perfect Pattern templates, please contact your sales representative.

GEMINI INCORPORATED | 800-538-8377
 Sales@GeminiSignProducts.com

GEMINI CANADA LTD | 800-265-0426
 Canada@GeminiSignProducts.com

GeminiSignProducts.com

Made True.

