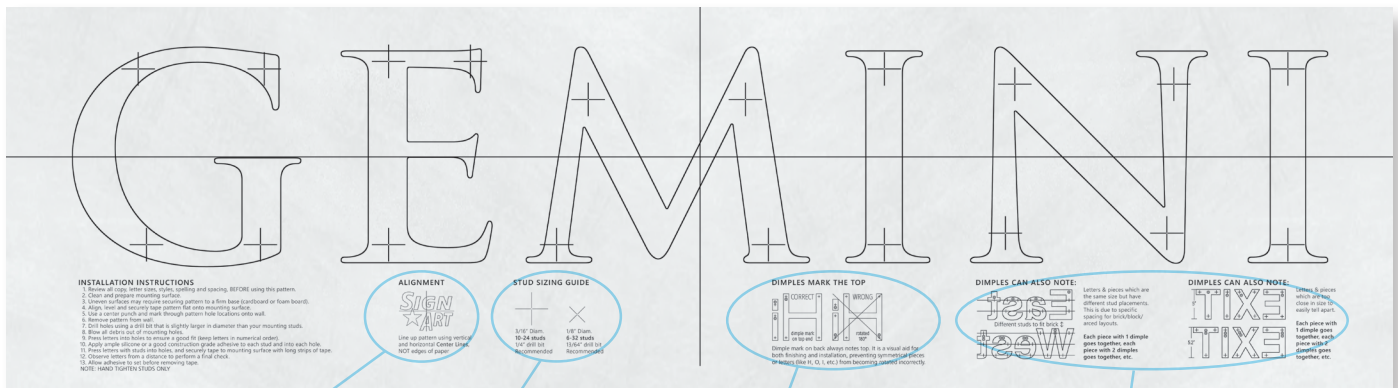


GEMINI

Perfect Pattern™ from Gemini.

Digitally precise, durably reliable, expanded application. Gemini's digital technology now provides a better, more accurate tool for mounting flat-cut acrylic, GemLeaf™ and metal letters (coming soon for metal laminates). The mounting patterns are computer-generated and calibrated to production equipment, printed on Tyvek® to provide resistance to tears and the weather, and assure perfect alignment and exact drill hole locations. These exact hole locations are saved and easily replicated for replacement letters or repeat orders.

Improve your installation experience and ensure the look of each finished sign, with Perfect Pattern from Gemini — your guide to a perfect installation, every time.



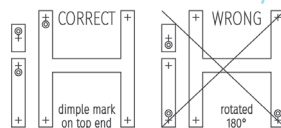
Center Line Alignment

Patterns are aligned with horizontal and vertical lines from the center making installation more reliable.



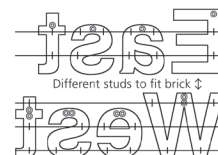
Stud Sizing Guide

The stud sizing guide provides recommendations for proper drill bits depending on determined stud size.



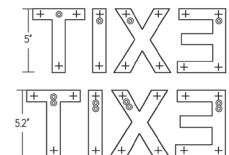
Top/Bottom Orientation

Dimples are marked on the back to help identify proper orientation.



Placement/Sizing Indicators

Dimples can also indicate the line a character belongs to, as well as differentiate similar size letters which will have different stud placements.



Features and Benefits

- Precise drill locations marked, along with recommended drill bit size
- Identical letters are interchangeable
- Printed on weather-resistant Tyvek for no smudging, no tearing
- Printed legend with instructions
- Ability to produce and install replacement letters, with no extra drilling
- Ability to pre-order a pattern allowing pre-work for large scope installations

For more information about Perfect Pattern templates, please contact your sales representative.

GEMINI INCORPORATED | 800-538-8377
Sales@GeminiSignProducts.com

GEMINI CANADA LTD | 800-265-0426
Canada@GeminiSignProducts.com

[GeminiSignProducts.com/Perfect Pattern](http://GeminiSignProducts.com/PerfectPattern)

Made True.

