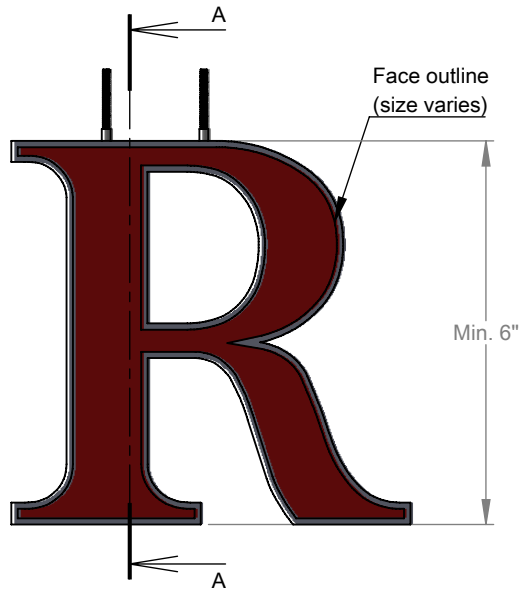
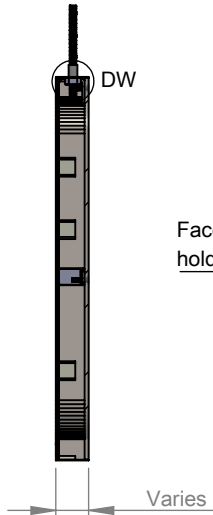


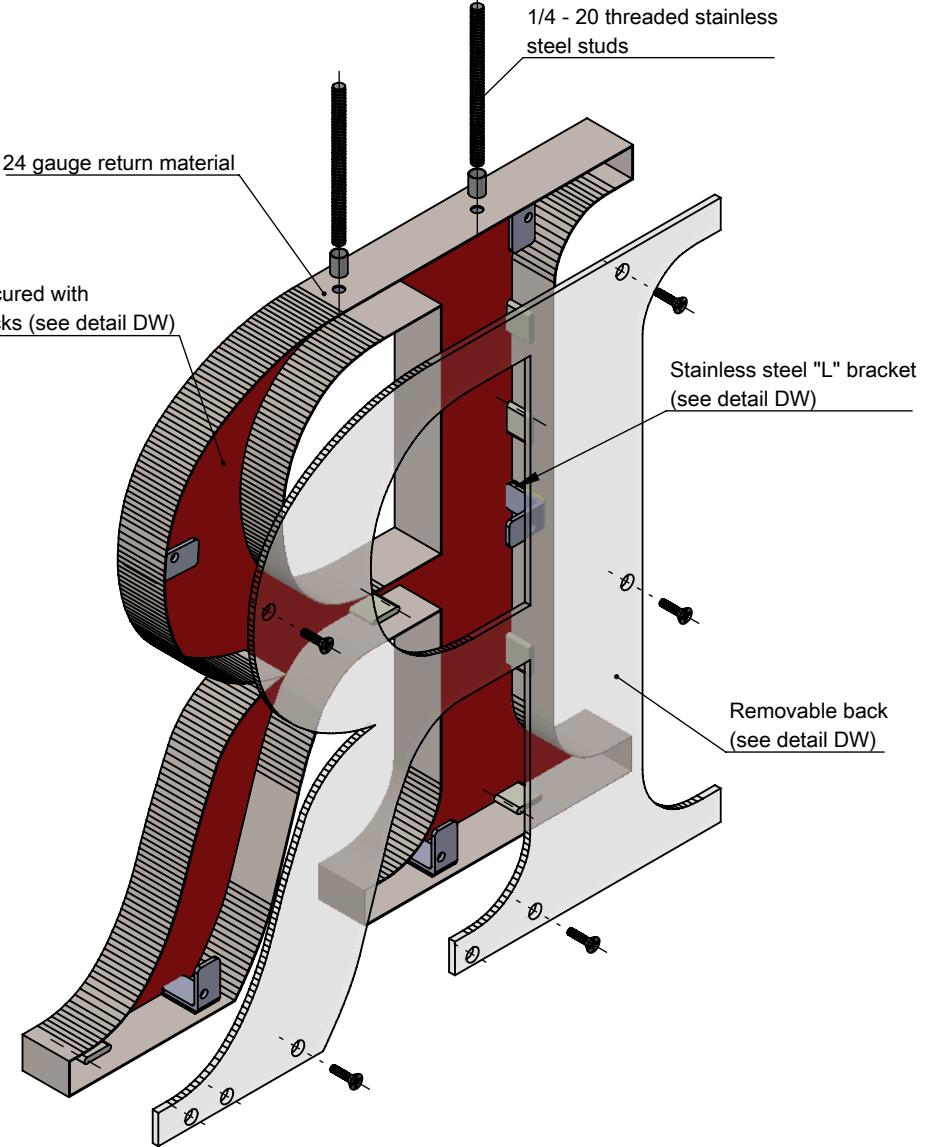
PRODUCT CONSTRUCTION EXAMPLE



FRONT VIEW II SCALE 1:6



SECTION A-A II SCALE 1 : 6

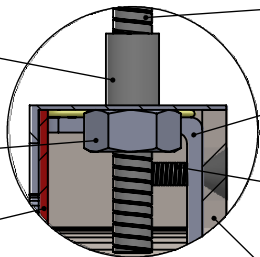


ISOMETRIC BACK VIEW II SCALE 1:3

Optional spacer sleeve (size varies)

Stainless steel Hex nut (size varies) Soldered to inside of return

Face insert secured with hold-down blocks



Stainless steel mounting stud (size varies)

"L" bracket secured with high resistance epoxy to return

Flush back secured with stainless steel screw

Removable clear or light diffused Lexan or stainless steel back.

DETAIL DW II SCALE 1 : 1

NOTES:

- This mounting option is recommended for interiors only
- Tie backs required (not supplied) on letters > 8" high
- Return grain will run around the perimeter of the letter

BACK OPTIONS

- Clear Lexan: 6-12" high - 0.118 thick.
- Light diffused Lexan: 0.177" thick.
- Stainless steel - same gauge as face.

MATERIAL OPTIONS

- Standard - 304 prefinished stainless steel
- Optional - 316 prefinished stainless steel (more corrosion resistant)
- 304 prefinished stainless with titanium coating

INSERT OPTIONS	
Stainless steel	18-20 gauge up to 24" high
Acrylic	3/16" thick - up to 36" high



TITLE:

CUT OUT FACE WITH INSERT - WITH BACK FOR LEDS - TOP STUD MOUNT

MATERIAL:

STAINLESS STEEL

PRODUCT TYPE:

FABRICATED METAL